

Native to  
Borneo.

# *Alpinia ligulata* K. Schum. in Engler

R.Baker 11208

Also: **L-94.0270**, Borneo: Sarawak; J. Mood 121  
(see its own PP).

**L-95.0359**, J. Mood 560; also Waimea 93p255, &  
Tenom O.C. 12. **(Not planted yet.)**

11206

11207

11205

11209

12891

12892

12893

20568

20569

Above: **L-97.0041 (dwarf form)**, Borneo: Sabah, J. Mood  
982. Planted **c.15' ewa/mauka of A6-39-3 *Albizia*, 8' from  
stream bank** (Mar 97).

Above: **L-98.0560**, J.Mood 1331.  
Planted **8' ewa of H25-12-6  
*Cavanillesia*** (Jul 99).

**MORE**





# *Alpinia ligulata* K. Schum. in Engler

Native to  
Borneo.



8193



8194

8192 Photos: R. Baker



12235

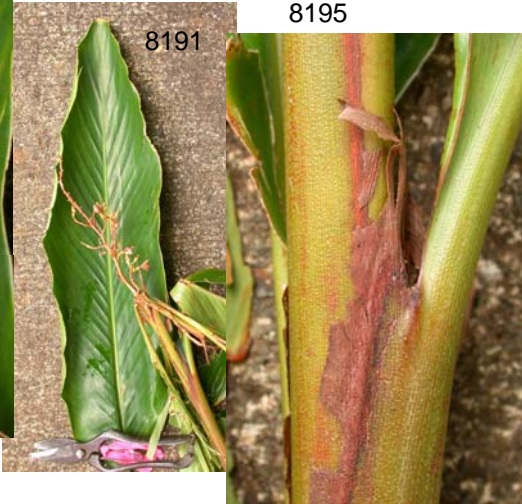


14848



12234

12236



8191

8195

12237



12238



14849

14850

14851

Zin\_Alpinia\_ligulata\_L940270\_w

**L-94.0270**, Borneo: Sarawak; J. Mood 121; via Waimea 91p320. Fruit single, round, smooth, flattened, orange outside, shell hard, splits in two; seeds multiple, asymmetric, 2 mm, black. Planted **above H30-21-1, next to spur road** (Apr 95). ID confirmed by H. Funakoshi, July 2002.