

Renalmia alpinia (Rottb.) Maas

Ecuador.

There is a good chance some of these are not *R. alpinia*. - RFB



14678

14679



14682



14680

14681



14683



14687



14684



14685



14686

MORE ↓

R.Baker
2022

Lyon L-78.0759, C. Rica: cult. at Las Cruces.
12 planted 7 Feb 1979, **between H23-3-2 & -3**.
Voucher: KMN 2338 - E only; 2452 – HLA. DNA
to D. Harris.

Renealmia alpinia (Rottb.) Maas L-89.644

Ecuador.

2021 R.Baker

13875



13876

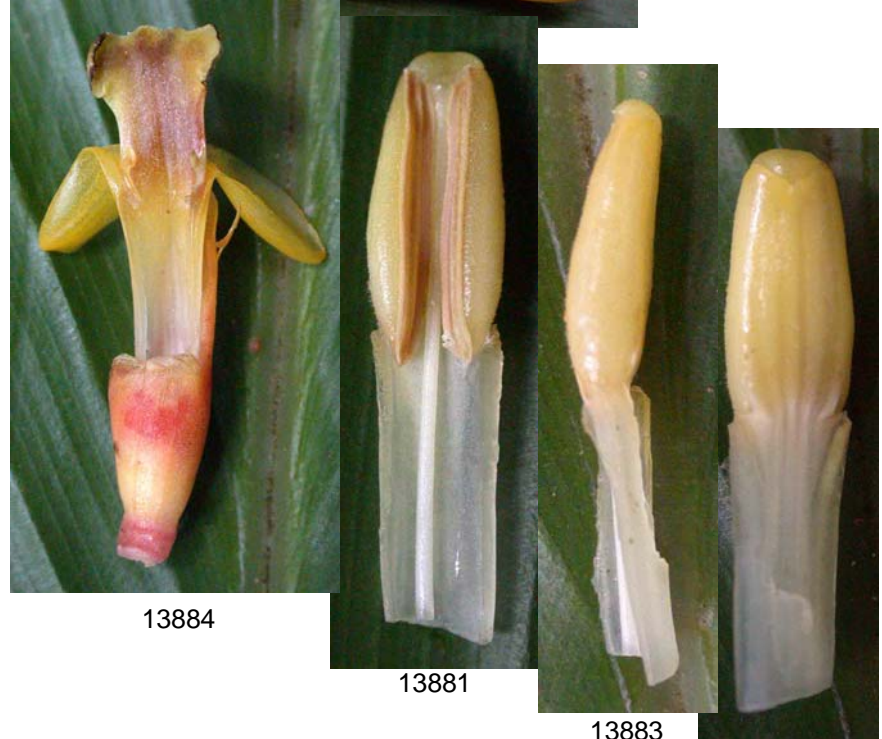


Lyon L-89.0644, Trinidad: Asa Wright Nature Ctr.; coll. by D. Bar-Zvi, as *R. thyrsoides*?. Voucher: KES 109 – HLA. To Waimea 90p332, Foster _____.

MORE 

Renalmia cf. *alpinia* (Rottb.) Maas L-94.0088

Ecuador.



Lyon L-94.0088, Ecuador: R. Yamakawa 4065. 1
 planted 29 Apr 1996, **H37, 8' makai/ewa of DH Inga**; in
 flower (2 infls), 11 Mar 99, 21 Feb 2001. Voucher: H.
 Funakoshi _____. DNA to D. Harris.

MORE 

Renalmia cf. *alpinia* L-94.0256

13896



13894

13893



13895

13897



13902



13903



13901



13898



13899



13900

Ecuador.

Lyon L-94.0256, Ecuador: "Nea-Unqui-si"
(Siecoya), from J.S. Miller. 2 planted 1997-
98, **H37, 5' ewa of `Trinidadano' cacao**; in
flower 6 Mar 2005. DNA to D. Harris.