

Plagiostachys strobilifera Ridl.

Native to Borneo.



12402



12403



12405



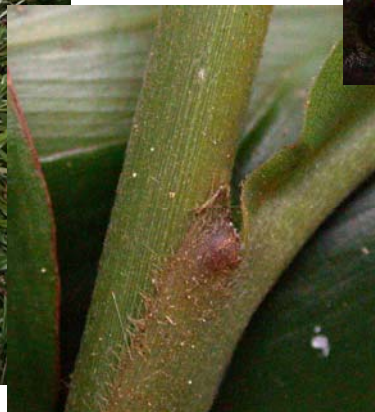
12404

n/c

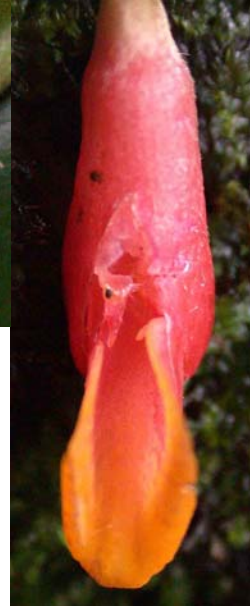
12184



R. Baker 12409



n/c



12408



12407



12406

Lyon L-95.0358, J. Mood 534. 3 planted 22 Nov 1995, 8' below A6-31-4 *Ficus* stump; in full flower, 11 Mar 1999, 21 Jun 2004. To H. Funakoshi; voucher: H. Funakoshi

MORE 

Plagiostachys strobilifera Ridl.

13873



13874

R.Baker

9012



L-97.0038, Borneo: Sabah; J.Mood "937", as *Plagiostachys* sp. (narrow leaves): ID by A. Julius; also L-95.0687, & Waimea 96p217. Planted **c.8' ewa/makai of A6-37-1 Albizia**, across path from big *Albizia*, Mar 1997 (2); young infls 21-28 Feb 2005 (2 left photos); unripe fruit 27 Jun 2002 (right).